

ITEM: CARGO HOLD BILGE WELLS

FINDING: BILGE STRUM BOX OR EQUIVALENT MISSING



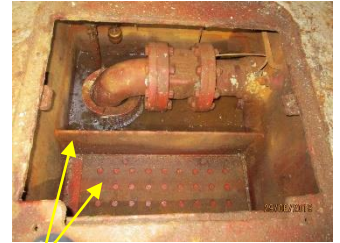
Strum box



*Bilge well without strum box
or strainer*



*Strainer plate on top of bilge
well*



*Strum box equivalent
(also strum box fitted)*

WHY IS THIS A PROBLEM?

TECHNICAL DATA: BILGE STRUM BOX OR EQUIVALENT

- The bilge suction line is normally fitted with a perforated strum box around the suction which prevents cargo debris from entering the bilge line
- This is not to be confused with a strainer plate on top of the bilge well (see photos)
- Some bilges are provided with a two-compartment system: one bilge well with a perforated cover (strainer) and one with a full cover. Between the two compartments there is an opening to allow water to overflow, which can also be fitted with a perforated plate to prevent debris from entering the bilge line

ISSUE WHEN NO PROTECTION IS FITTED

- When no protection is provided for the bilge suction, any debris can enter the suction line and cause clogging (impair suction) or get stuck in the non-return system on the bilge line (cause backflow)



WHAT KIND OF FEEDBACK IS EXPECTED?

CORRECTIVE ACTION

- If spare parts are installed: order note or photograph of installation

PREVENTIVE MEASURES

- Explanation of your protection in place. This can be physical or procedural