

**ITEM: CARGO HOLD BILGES**

**FINDING:** No suction upon test of one or more bilges



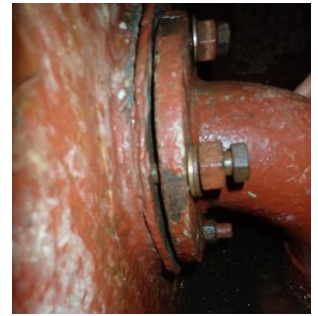
*No suction - blocked pipe*



*No suction - bilge full of previous cargoes*



*No suction - welded cover*



*No suction - bilge pipe part dismantled*

**WHY IS THIS A PROBLEM?**

**TECHNICAL DATA: CARGO HOLD BILGES**

Resuming SOLAS, regulation 21 (bilge pumping arrangements) for cargo ships we note that:

- An efficient bilge pumping system shall be provided capable of pump from any watertight compartment under all **practical conditions**.
- **Sanitary, ballast and general service pumps** may be accepted as independent power bilge pumps if fitted with the necessary connections to the bilge system.

**ISSUE WHEN BILGES DON'T EMPTY**

- When water accumulates in the cargo hold, it cannot be evacuated efficiently
- Bilge pumping capacity for each hold is defined by Class to minimise damages in case of incident
- All bilges should be operational to warrant safety of life, vessel and cargo in case of an incident



## **WHAT KIND OF FEEDBACK IS EXPECTED?**

### **CORRECTIVE ACTIONS**

- Identification of the reason for lack of suction
- Details of your repairs effected

### **PREVENTIVE MEASURES**

- Explanations of your detailed, ship-specific and periodic testing procedures and routines