

ITEM: QUICK ACTING CLEATS

FINDING: Quick acting cleats with additional rubber/steel washers
Quick acting cleats with washers cracked



Cleat with additional rubber and steel washers



Cleat with additional rubber washers



Cleat with additional steel washers



Cleat with cracked washer

WHY IS THIS A PROBLEM?

TECHNICAL DATA : QUICK ACTING CLEATS

- Also called speed-locks, cleats
- Purpose = upwards Fz stopper. It allows for relative movement of the hatch cover panels, but keeps them from moving too much, or falling off
- Usual contents as per drawing below, but should be verified with the hatch cover manual
- Rubber washers are fitted with a steel ring in the middle to limit compression to a few millimetres

ISSUE WHEN THERE ARE TOO MANY RUBBER WASHERS

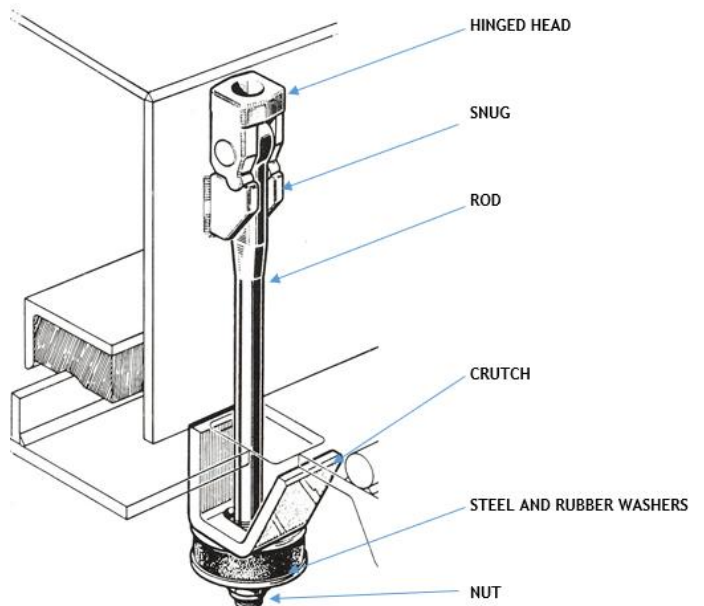
This increases the possible relative movement of the panels and can cause weathertightness issues.

ISSUE WHEN THERE ARE TOO MANY STEEL WASHERS

This is usually done when the thread to secure the nut is wasted. Whereas this does not directly affect weathertightness (and is a non-scoring item for AM inspections), it is good practice to replace the rod when parts are worn.

ISSUE WHEN THE RUBBER WASHERS ARE CRACKED

This is usually the case when the cleats are over-tightened. This only increases stress on the cleat parts and reduces strength. It has no benefits to weathertightness.



WHAT KIND OF FEEDBACK IS EXPECTED?

CORRECTIVE ACTIONS

- Documentation of replaced parts

PREVENTIVE MEASURES

- Explanation of procedures to avoid poor practice in the future